



SERVICE DOCUMENT: GX AND GXI NYLOC DETENT PIN ASSEMBLY

VERSION 1



Service Document for Assembling the Nyloc Detent Pin on Gocycle GX or GXi.



Contents

Contents

Contents.....	i
Tool List.....	0
Best Practice Guidelines	1
Electrical System Best Practice Guidelines	1
1. Remove the Detent Pin	2
2. Disassembling the Detent Pin	3
3. Assembling the Nyloc Detent Pin Assembly.....	4



TOOL LIST

To successfully complete this procedure, you will require the following tools. *Special KKL tools can be purchased by their tool number detailed below.*

Part Code	Tool Description
	Vice
	8mm combination wrench

Part Code	Part Description
KKL-3127-0000-01	M5 Nyloc Nut



BEST PRACTICE GUIDELINES

Before conducting any service or maintenance on the Gocycle ensure the following points are adhered to:

1. The battery must be in 'Sleep Mode' (switched off).
2. Ensure the Gocycle is appropriately secured to prevent injury and damage.
3. If the Gocycle has been ridden continuously for more than 5 minutes, allow a minimum of 30 minutes before performing any maintenance or service activity on the electrical system. Examples include removing, installing connecting or disconnecting the battery.
4. If maintenance is being performed within 30 minutes of usage, components such as the battery, motor and gearbox may be hot. Treat these components with care and allow time to cool to a safe handling temperature before conducting any maintenance.
5. Read and understand the following service document fully.
6. Only use the tools specified to complete assembly instructions and ensure torque requirements are met and checked.
7. Follow **all** instruction steps accurately and in the correct order, taking note of any cautions and/or warnings.
8. If in doubt, or you require further explanation on a procedure, please contact your authorised Gocycle Service Centre for assistance or our Gocycle Technical Support Executives.

ELECTRICAL SYSTEM BEST PRACTICE GUIDELINES

1. It is not recommended to disconnect, connect, remove or install the battery in environments above 40°C.
2. If you discover damage to any of the electrical system components other than light cosmetic, such as exposed or corroded electrical connections or damaged wiring contact your authorised Gocycle Service centre immediately and do not attempt to operate the Gocycle.
3. Use extreme care when handling the battery to prevent any physical damage. Immediately contact your authorised Gocycle Service centre if there is physical damage.
4. Do not puncture or subject the battery to strong impacts.
5. Do not attempt to disassemble or modify the battery.
6. Do not expose the battery to excess water or moisture.
7. The battery has been designed specifically for use with the Gocycle GX. Do not use the battery with any other product.
8. Do not expose the battery to fire.
9. Only use the specified Gocycle GX charger.
10. Do not leave the battery unattended whilst charging.
11. Only use, charge or store the battery in an environment with ambient temperatures between 0°C and 40°C (32°F and 104°F) and a humidity of 45% to 85% RH.



1. REMOVE THE DETENT PIN



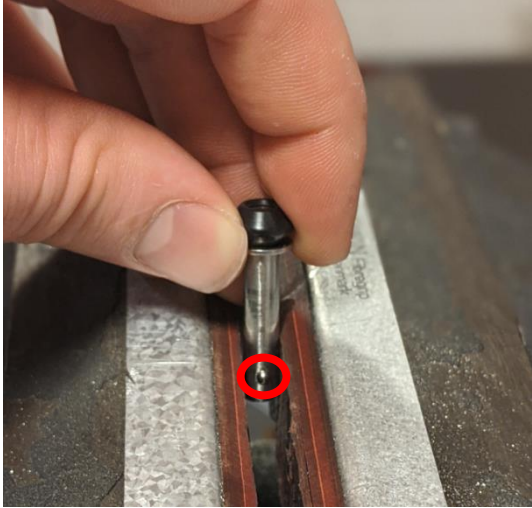
1.1 Fold the Gocycle



1.2 Remove the detent pin

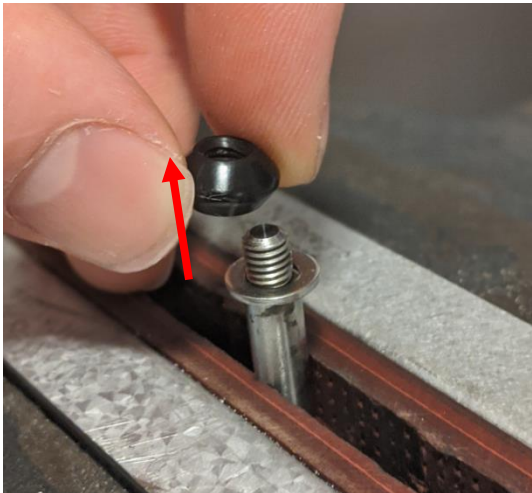


2. DISASSEMBLING THE DETENT PIN

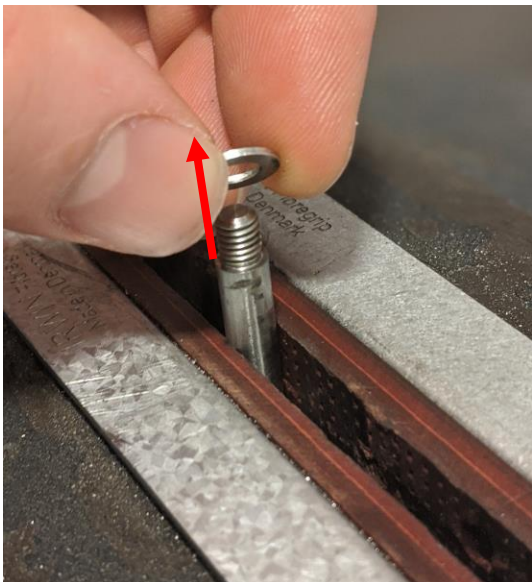


2.1 Clamp the detent pin in a vice using soft jaws.

Ensure the detent balls are not being pressed by the vice.



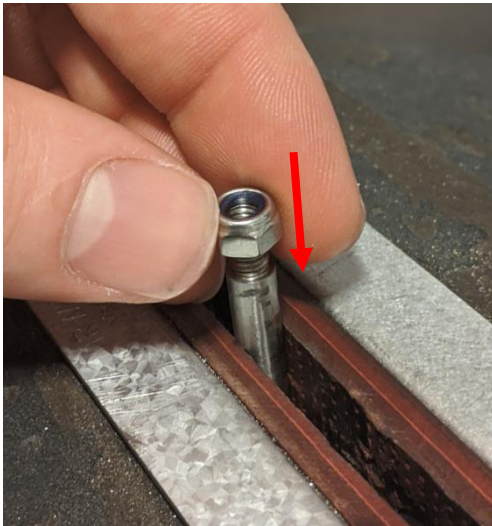
2.2 Remove the plastic head of the detent pin



2.3 Remove the washer from the detent pin



3. ASSEMBLING THE NYLOC DETENT PIN ASSEMBLY



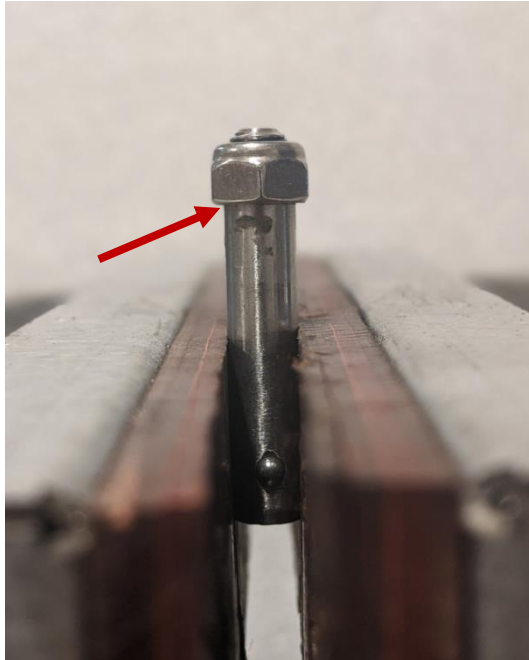
3.1 Fit the M5 Nyloc Nut onto the detent pin



3.2 Use the 8mm spanner to tighten the nut

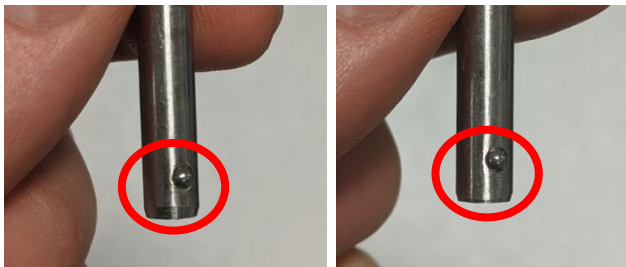


3.3 Fully tighten the nut.
Make sure the detent pin is not turning in the vice.

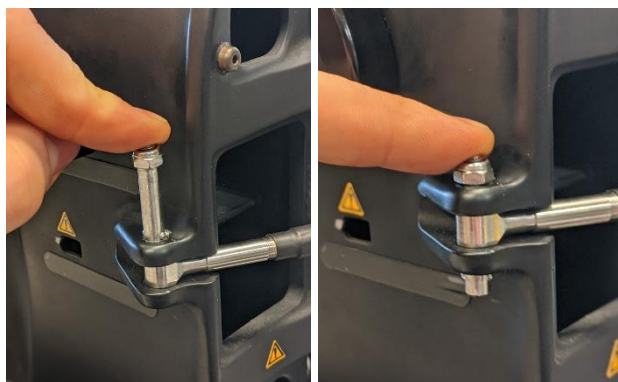


3.4 Check the M5 Nyloc is fully tightened onto the detent pin.

Make sure there is no gap below the nyloc nut



3.5 Remove the detent pin from the vice and check there is no debris blocking the detent balls



3.6 Install the Nyloc Detent Pin Assembly

Please go to [Gocycle Support](#) to see the latest tech bulletins, maintenance guides and product manuals.

IMPORTANT NOTE: YOU MUST CARRY OUT THE ABOVE REMOVAL AND REPLACEMENT STEPS IN ORDER. FAILING TO DO SO MAY RESULT IN DAMAGE TO THE GOCYCLE.

If you have any further queries or comments, please contact Gocycle Technical Support using our [contact form](#)