



SERVICE DOCUMENT: GX FRAME CABLE GROMMET MODIFICATION GUIDE

VERSION 4



Service Document for the Gocycle GX Frame Cable Grommet
Modification



Contents

Contents.....	i
Overview.....	1
Tool List.....	1
Best Practice Guidelines.....	2
Electrical System Best Practice Guidelines.....	2
1. Removing the Battery.....	3
2. Removing the Frame Cable Grommet.....	4
3. Installing the frame cable grommet.....	7
4. Installing The Battery.....	8



OVERVIEW

This service document details the modification of the GX frame cable grommet. If you have any questions, or require any further assistance, please contact techsupport@gocycle.com.

TOOL LIST

To successfully complete this procedure, you will require the following tools. *Special KKL tools can be purchased by their tool number detailed below.*

Part Code	Tool Description
	Scissors or Flush Cutters



BEST PRACTICE GUIDELINES

Before conducting any service or maintenance on the Gocycle ensure the following points are adhered to:

1. The battery must be in 'Sleep Mode' (switched off).
2. Ensure the Gocycle is appropriately secured to prevent injury and damage.
3. If the Gocycle has been ridden continuously for more than 5 minutes, allow a minimum of 30 minutes before performing any maintenance or service activity on the electrical system. Examples include removing, installing connecting or disconnecting the battery.
4. If maintenance is being performed within 30 minutes of usage, components such as the battery, motor and gearbox may be hot. Treat these components with care and allow time to cool to a safe handling temperature before conducting any maintenance.
5. Read and understand the following service document fully.
6. Only use the tools specified to complete assembly instructions and ensure torque requirements are met and checked.
7. Follow **all** instruction steps accurately and in the correct order, taking note of any cautions and/or warnings.
8. If in doubt, or you require further explanation on a procedure, please contact your authorised Gocycle Service Centre for assistance or our Gocycle Technical Support Executives.

ELECTRICAL SYSTEM BEST PRACTICE GUIDELINES

1. It is not recommended to disconnect, connect, remove or install the battery in environments above 40°C.
2. If you discover damage to any of the electrical system components other than light cosmetic, such as exposed or corroded electrical connections or damaged wiring contact your authorised Gocycle Service centre immediately and do not attempt to operate the Gocycle.
3. Use extreme care when handling the battery to prevent any physical damage. Immediately contact your authorised Gocycle Service centre if there is physical damage.
4. Do not puncture or subject the battery to strong impacts.
5. Do not attempt to disassemble or modify the battery.
6. Do not expose the battery to excess water or moisture.
7. The battery has been designed specifically for use with the Gocycle GX. Do not use the battery with any other product.
8. Do not expose the battery to fire.
9. Only use the specified Gocycle GX charger.
10. Do not leave the battery unattended whilst charging.
11. Only use, charge or store the battery in an environment with ambient temperatures between 0°C and 40°C (32°F and 104°F) and a humidity of 45% to 85% RH.



1. REMOVING THE BATTERY

Note: Before commencing any work ensure the Gocycle is turned off

Please go to www.gocycle.com/safety for the GX Owners Manual.

Use Section "9.2.2 Charging the Battery Outside of the Gocycle" in the GX Owners Manual for the guide to removing the battery.



2. REMOVING THE FRAME CABLE GROMMET



2.1. Locate the frame cable grommet.

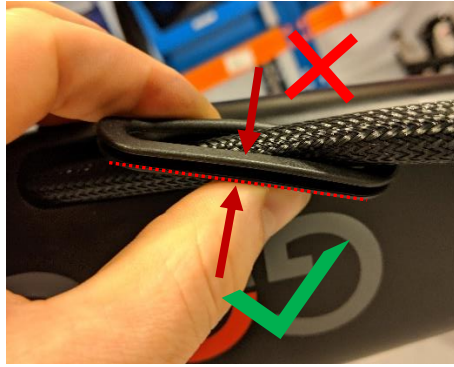


2.2. Remove the frame cable grommet.

Take care to avoid any damage to the frame.



2.3. Slide the frame cable grommet away from the frame.



2.4. Find the inside edge of the cable grommet.

Do not cut the outside edge.



2.5 Using scissors or cutters, cut 2mm off the back face.

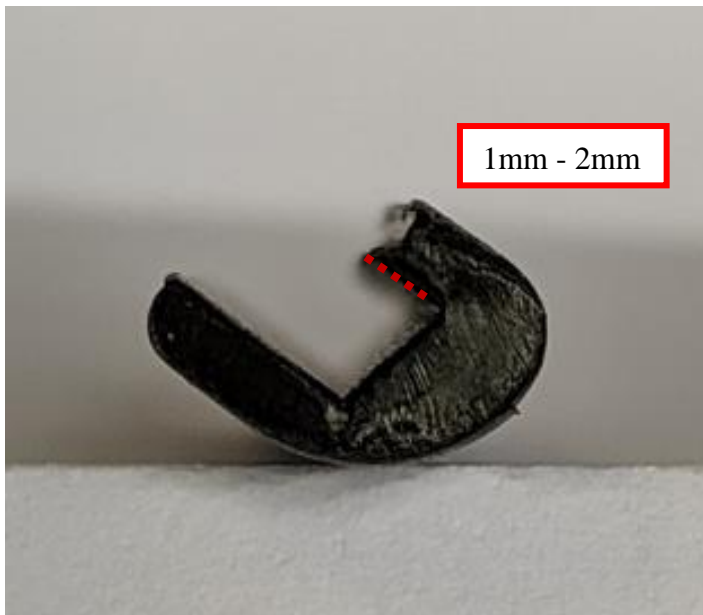
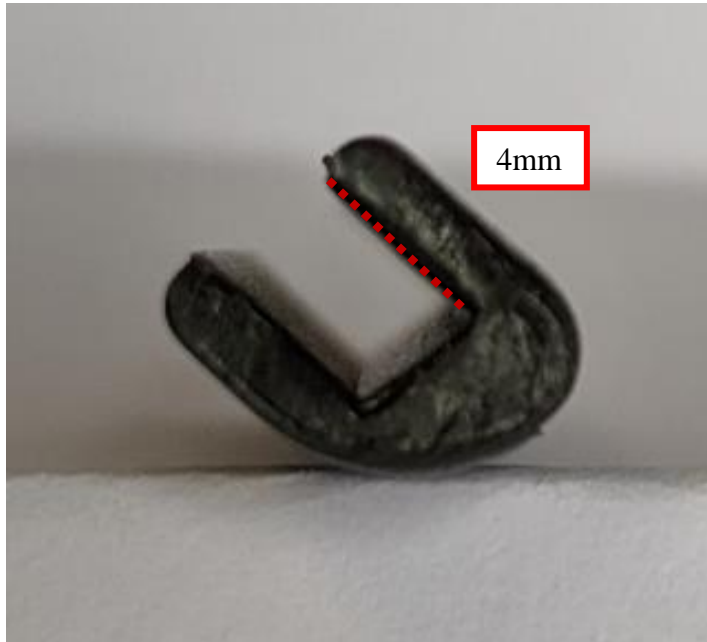
Be careful not to cut the cables harness or sheath.



2.6 Cut frame cable grommet all the way along the edge



2.7 The cut cable grommet.



2.8 Uncut Cable grommet compared to cut cable grommet.

Ensure there is still a small lip of 1mm - 2mm so it can be correctly seated in the frame.



3. INSTALLING THE FRAME CABLE GROMMET



3.1. Slide frame cable grommet towards the frame.



3.2. Check that the small dot is towards the bottom of the frame.



3.3. Slide one corner the frame cable grommet into the frame.

Ensure the corners and sides are correctly fitted



3.4. Check the frame cable grommet is correctly seated all the way round.



4. INSTALLING THE BATTERY

Please go to www.gocycle.com/safety for the GX Owners Manual.

Use Section "9.2.2 Charging the Battery Outside of the Gocycle" in the GX Owners Manual for the guide to installing the battery.

IMPORTANT NOTE: YOU MUST CARRY OUT THE ABOVE REMOVAL AND REPLACEMENT STEPS IN ORDER. FAILING TO DO SO MAY RESULT IN DAMAGE TO THE GOCYCLE.

If you have any further queries or comments, please contact Gocycle Technical Support:

techsupport@gocycle.com